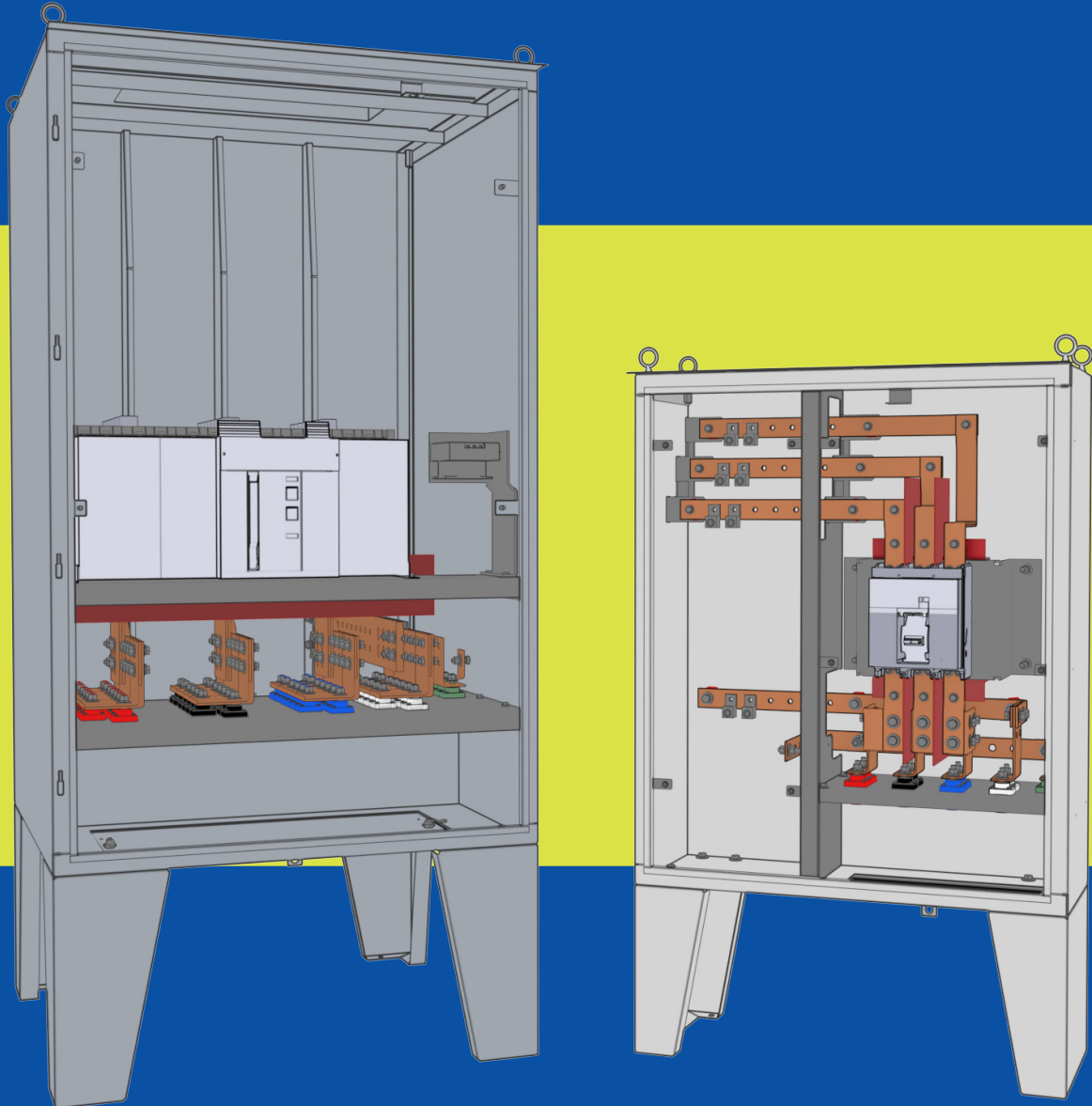


# POWER BUSWAY LTD.

## QUICK CONNECT PANELS & ACCESSORIES



### CONTACT US

T: 905.792.9333

F: 905.789.0510

TF: 1.877.877.2091

[sales-info@powerbusway.com](mailto:sales-info@powerbusway.com)

### ADDRESS

6900 Davand Drive

Mississauga, ON L5T 1J5 Canada



[POWERBUSWAY.COM](http://POWERBUSWAY.COM)

CONVENIENT ACCESS  
TO OUR SOCIAL MEDIA.

YOUTUBE. LINKEDIN. INSTAGRAM.





**SINCE  
2006**

# RELIABLE SERVICE

At Power Bus Way, we design and manufacture **Quick Connect Panels** that are **highly adaptable** and **customizable** to fit multiple power configurations.

We ensure that you will **always have access to power.**

**POWER BUS WAY**

[www.powerbusway.com](http://www.powerbusway.com)

We also **manufacture** and **design cable bus systems** in-house. Please **visit our website** for more information.

# APPLICATIONS



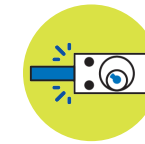
## EVENT POWER

- Tailored panel boards for quick, event-ready equipment connection.
- Vital equipment integration to meet specific event requirements.
- Streamlined solutions ensuring efficient event setup and success.



## DISASTER RECOVERY

- Permanent fixture to quickly connect mobile generators.
- Quick recovery without requiring permanent generators.
- Avoid safety hazards of connecting generators directly to distribution equipment.



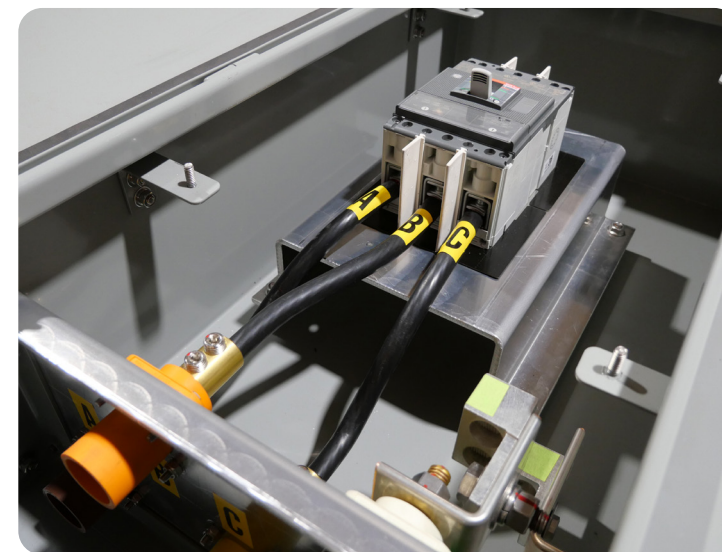
## TEMPORARY LOAD TRANSFER

- Safeguard critical loads during scheduled or emergency maintenance.
- Manual transfer switch ensures a secure transfer of essential loads.
- Kirk Key accessories provide a safe transition to temporary power.



## LOAD BANK CONNECTION

- Ideal for generators and UPS systems.
- Seamless load bank connection for quick testing.
- Swift setup for both generators and UPS systems.



480V/277V 225A Painted Camlock Box with Breaker



Double 600V 2000A Stainless Steel QC Panel



**SCAN ME TO VIEW  
QUICK CONNECT 3D SCAN**

Explore how our Quick Connect design seamlessly integrates into your environment.

# TECH SPECS

ELECTRICAL	<b>Voltage Range</b>	120V-600V
	<b>Current Range</b>	100A-4000A (4000A+ Available)
	<b>Configurations</b>	See table on the right for phase configurations
MECHANICAL	<b>Enclosure Type</b>	2, 3R, 3RX, 4, 4X
	<b>Materials</b>	Steel, Aluminum, 304 Stainless Steel, 316 Stainless Steel
	<b>Finishes</b>	Natural, Galvanized, Painted (Standard Industry Finishes, Custom Colours)
	<b>Assembly</b>	Welded, Bolted (Indoor Only)
	<b>Opening Types</b>	Welded Loop, Recessed Finger, Latched Handle
	<b>Handle Types</b>	Panel, Single Door, Double Door, Custom Cut-outs Available
	<b>Enclosure Size</b>	Up to 8'H x 8'W x 6'D
	<b>Mounting</b>	Wallmount, Floormount, Custom Mount Available

# CERTIFICATIONS

## ELECTRICAL

CSA C22.2 No. 178.1:14    CSA C22.2 No. 244:19    UL 1008    UL 1773    UL 891

## MECHANICAL

CSA C22.2 No. 94.1    CSA C22.2 No. 94.2    UL 50    UL 50E



# PHASE CONFIGURATIONS



VOLTAGE	CAMLOCK COLOUR GUIDE					CAMLOCK COLOUR GUIDE						
	CODE	A	B	C	N	G	CODE	A	B	C	N	G
120/240V	US1	●	●		○	●	CA1	●	●		○	●
208V	US2	●	●	●		●	CA2	●	●	●		●
208Y/120V	US3	●	●	●	○	●	CA3	●	●	●	○	●
480Y/277V	US4	●	●	●	○	●						
480V	US5	●	●	●		●						
600Y/347V							CA4	●	●	●	○	●
600V							CA5	●	●	●		●

**ORDER TO SPEC.**

**DELIVERED IN SPEC.**



Installed - Camlock Snap Covers



Manufactured In-House

# QUICK CONNECT

## ELECTRICAL

CSA C22.2 No. 244:19

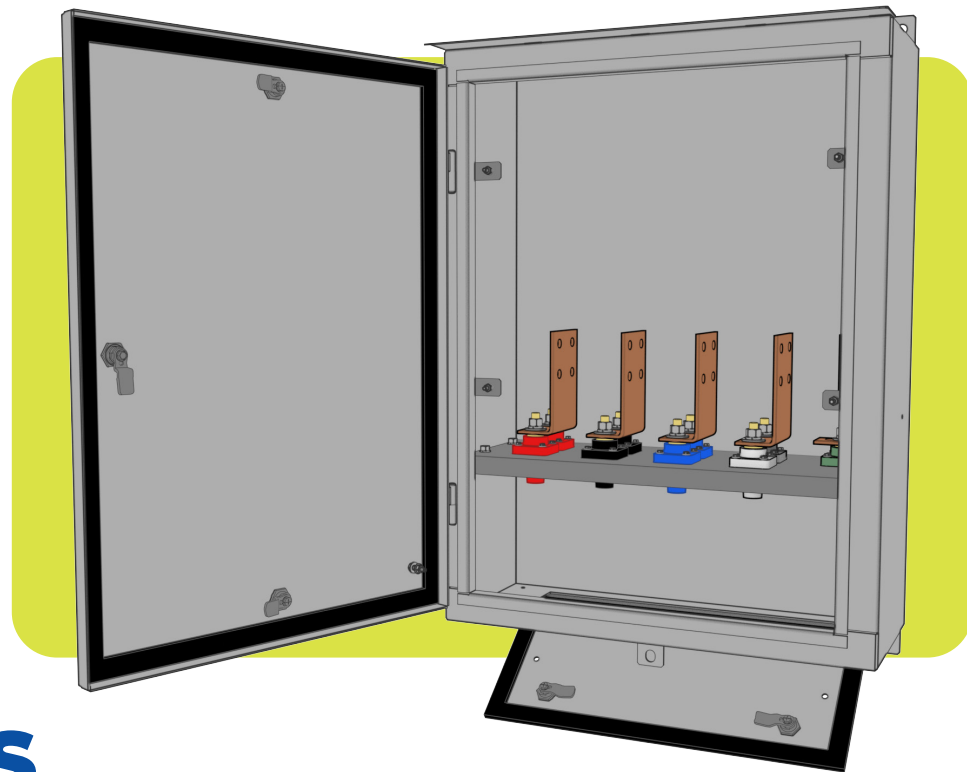
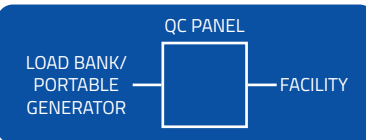
## MECHANICAL

CSA C22.2 No. 94.1

CSA C22.2 No. 94.2

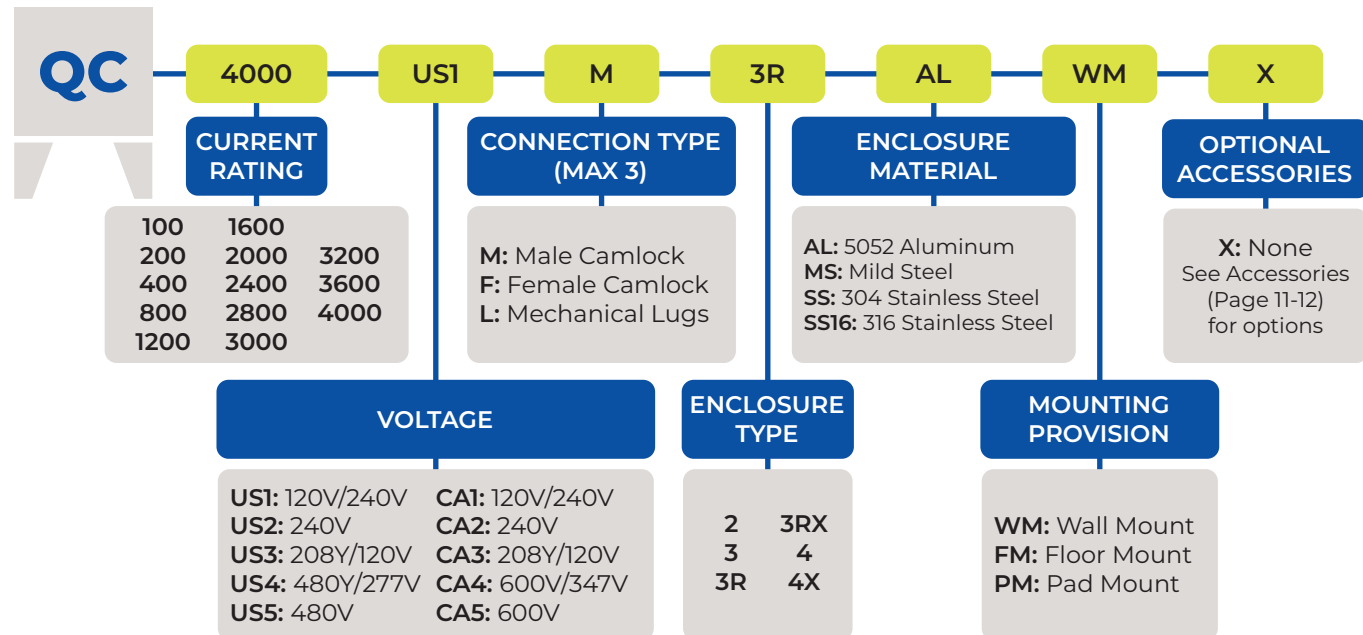
UL 50

UL 50E



## FEATURES

- STANDARD CURRENT RATINGS UP TO 4000A
- ENCLOSURE RATING UP TO 4X
- WELDED METAL CONSTRUCTION
- CUSTOM COLOURS AVAILABLE
- VENTILATED ENCLOSURE
- WHILE-IN-USE PREVENTATIVE ACCESS
- COLOUR-CODED CAMLOCK RECEPTACLES
- AVAILABLE IN A VARIETY OF VOLTAGE CONFIGURATIONS
- CONFIGURABLE FOR INLET (GENERATOR) OR OUTLET (LOAD BANK, EVENT POWER)



# QUICK CONNECT WITH BREAKER

## ELECTRICAL

CSA C22.2 No. 244:19

## MECHANICAL

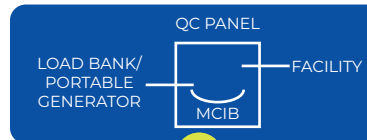
CSA C22.2 No. 94.1

CSA C22.2 No. 94.2

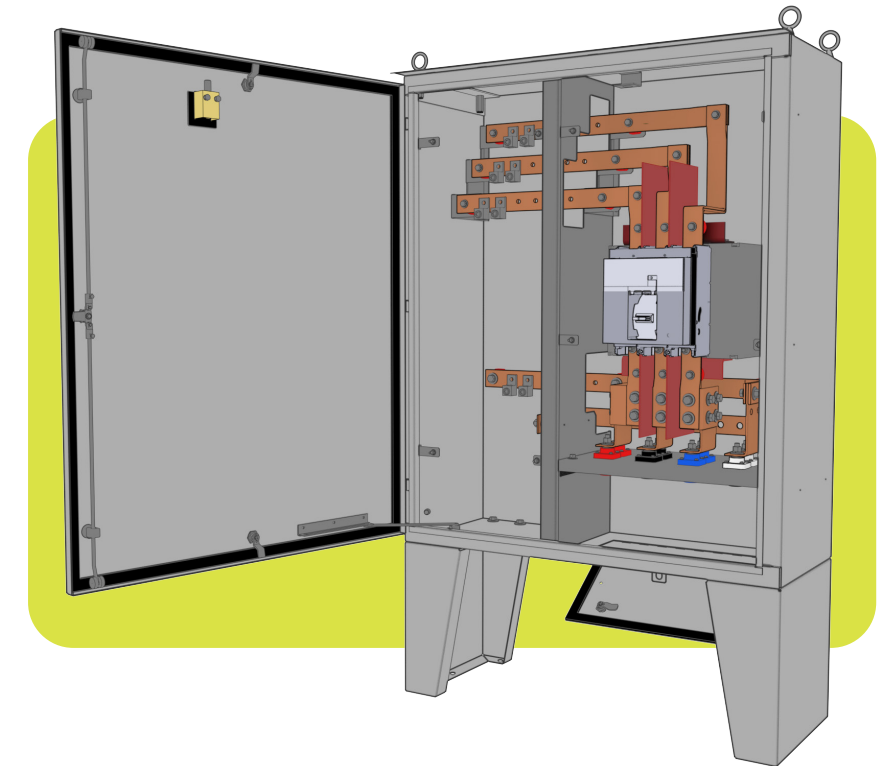
UL 50

UL 50E

UL 891

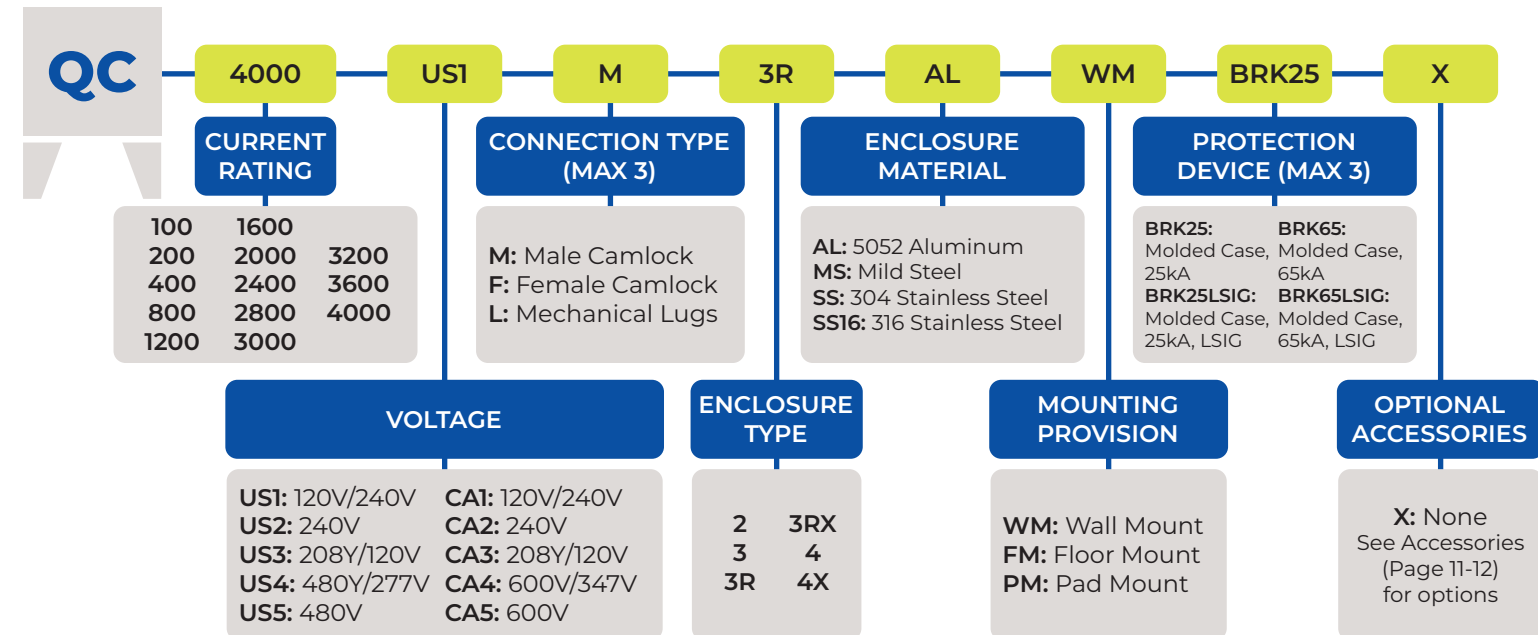


MOLDED CASE BREAKER  
25kA & 65kA  
OPTIONAL LSIG



## FEATURES

- STANDARD CURRENT RATINGS UP TO 4000A
- ENCLOSURE RATING UP TO 4X
- WELDED METAL CONSTRUCTION
- CUSTOM COLOURS AVAILABLE
- VENTILATED ENCLOSURE
- WHILE-IN-USE PREVENTATIVE ACCESS
- COLOUR-CODED CAMLOCK RECEPTACLES
- AVAILABLE IN A VARIETY OF VOLTAGE CONFIGURATIONS
- CONFIGURABLE FOR INLET (GENERATOR) OR OUTLET (LOAD BANK, EVENT POWER)



# QUICK CONNECT WITH DISCONNECT

## ELECTRICAL

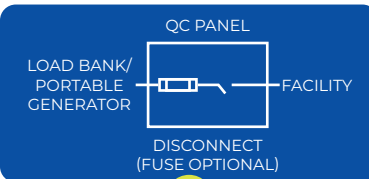
CSA C22.2 No. 244:19

## MECHANICAL

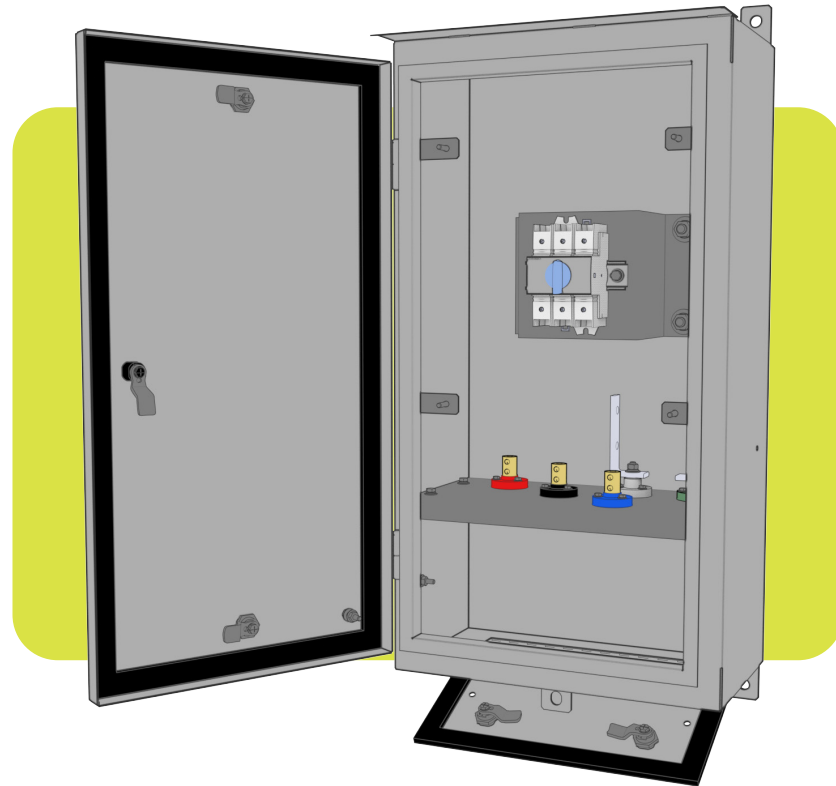
CSA C22.2 No. 94.1

CSA C22.2 No. 94.2

UL 50 UL 50E UL 891

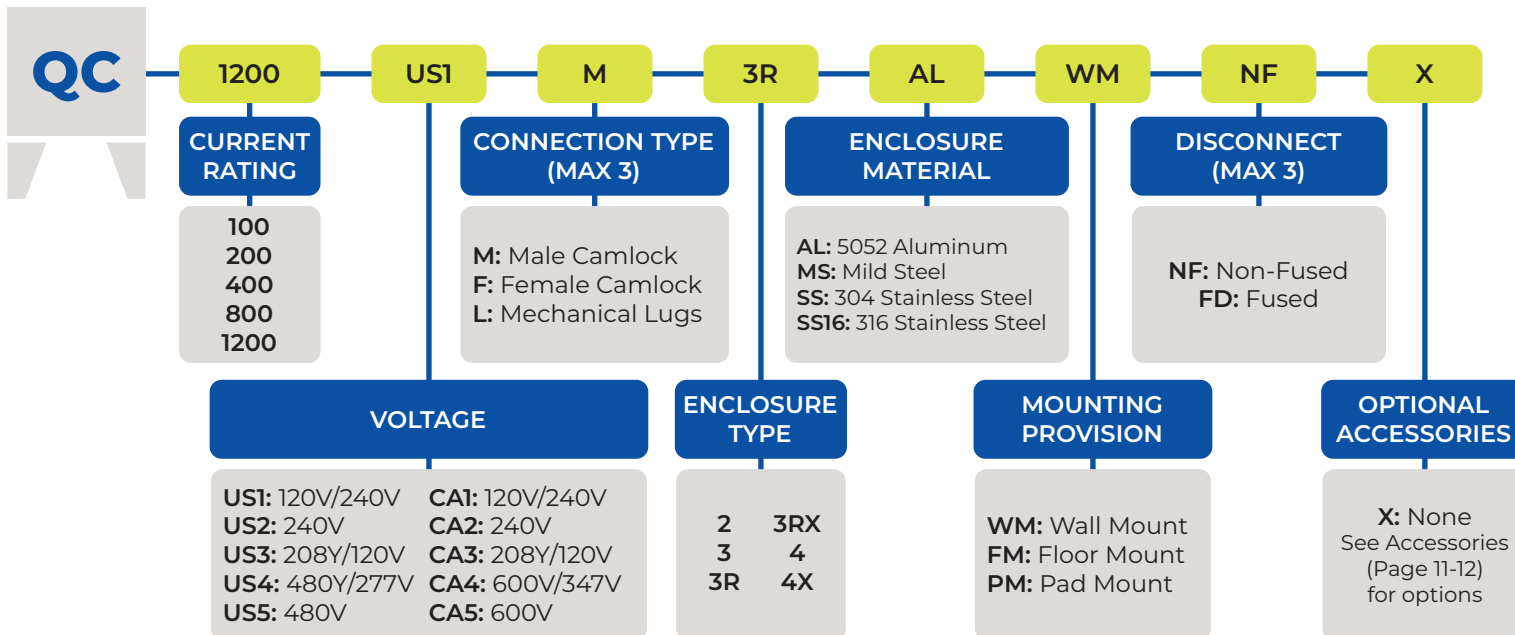


DISCONNECT SWITCH CAN BE NON-FUSED OR FUSED



## FEATURES

- STANDARD CURRENT RATINGS UP TO 1200A
- ENCLOSURE RATING UP TO 4X
- WELDED METAL CONSTRUCTION
- CUSTOM COLOURS AVAILABLE
- VENTILATED ENCLOSURE
- WHILE-IN-USE PREVENTATIVE ACCESS
- COLOUR-CODED CAMLOCK RECEPTACLES
- AVAILABLE IN A VARIETY OF VOLTAGE CONFIGURATIONS
- CONFIGURABLE FOR INLET (GENERATOR) OR OUTLET (LOAD BANK, EVENT POWER)



# QUICK CONNECT WITH MANUAL TRANSFER SWITCH

## ELECTRICAL

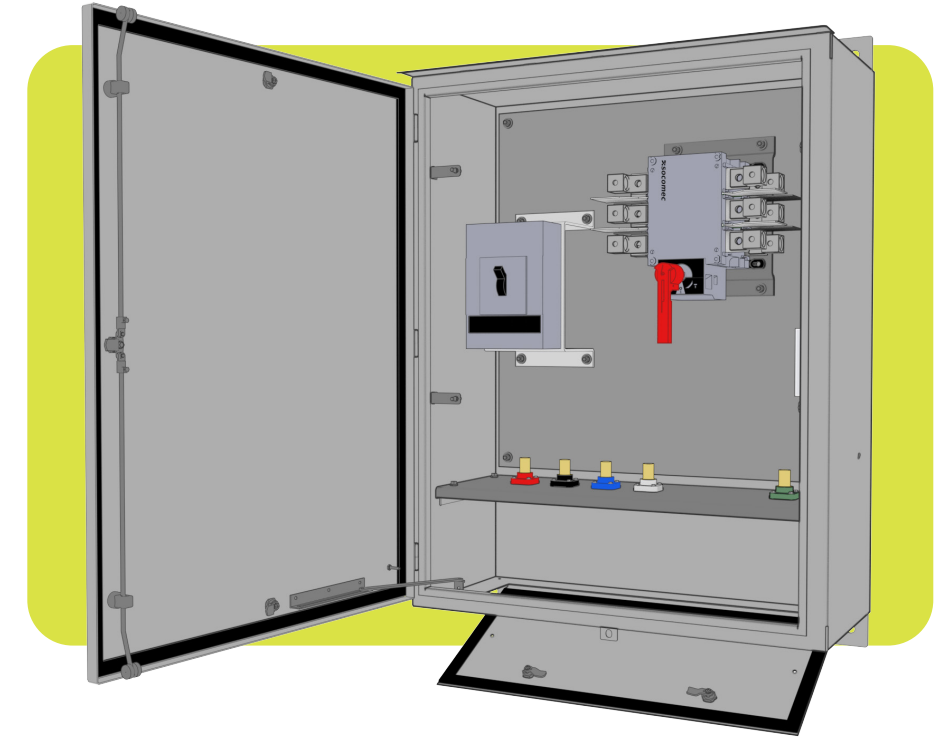
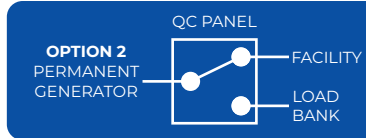
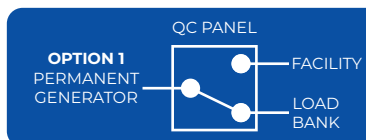
CSA C22.2 No. 178.1-14

## MECHANICAL

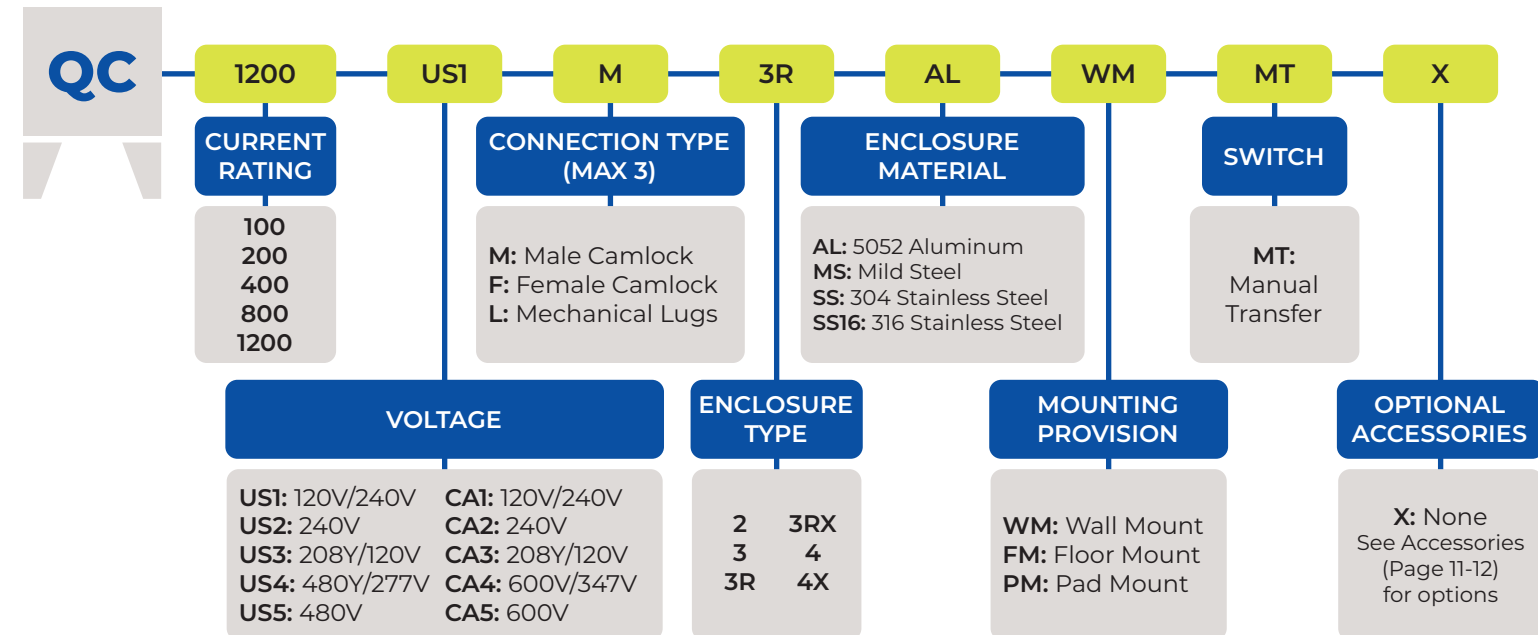
CSA C22.2 No. 94.1

CSA C22.2 No. 94.2

UL 1008 UL 1773



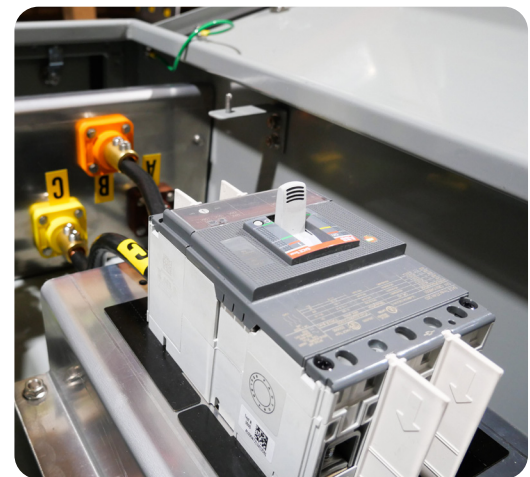
- STANDARD CURRENT RATINGS UP TO 1200A
- ENCLOSURE RATING UP TO 4X
- WELDED METAL CONSTRUCTION
- CUSTOM COLOURS AVAILABLE
- VENTILATED ENCLOSURE
- WHILE-IN-USE PREVENTATIVE ACCESS
- COLOUR-CODED CAMLOCK RECEPTACLES
- AVAILABLE IN A VARIETY OF VOLTAGE CONFIGURATIONS
- CONFIGURABLE FOR INLET (GENERATOR) OR OUTLET (LOAD BANK, EVENT POWER)



# MADE IN-HOUSE.



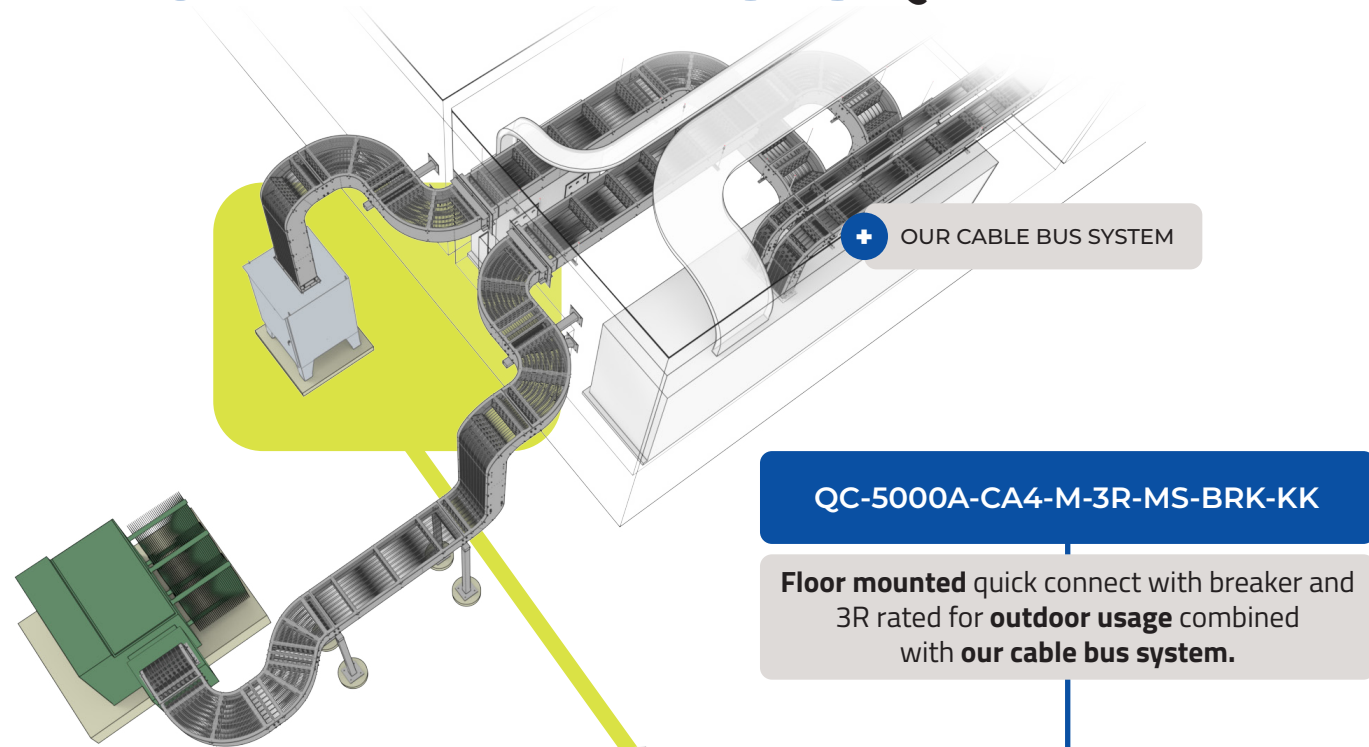
**\*\*\* RELIABLE \*\*\***



**TIN PLATED**

# JUST FOR YOU.

# CABLE BUS WITH QUICK CONNECT



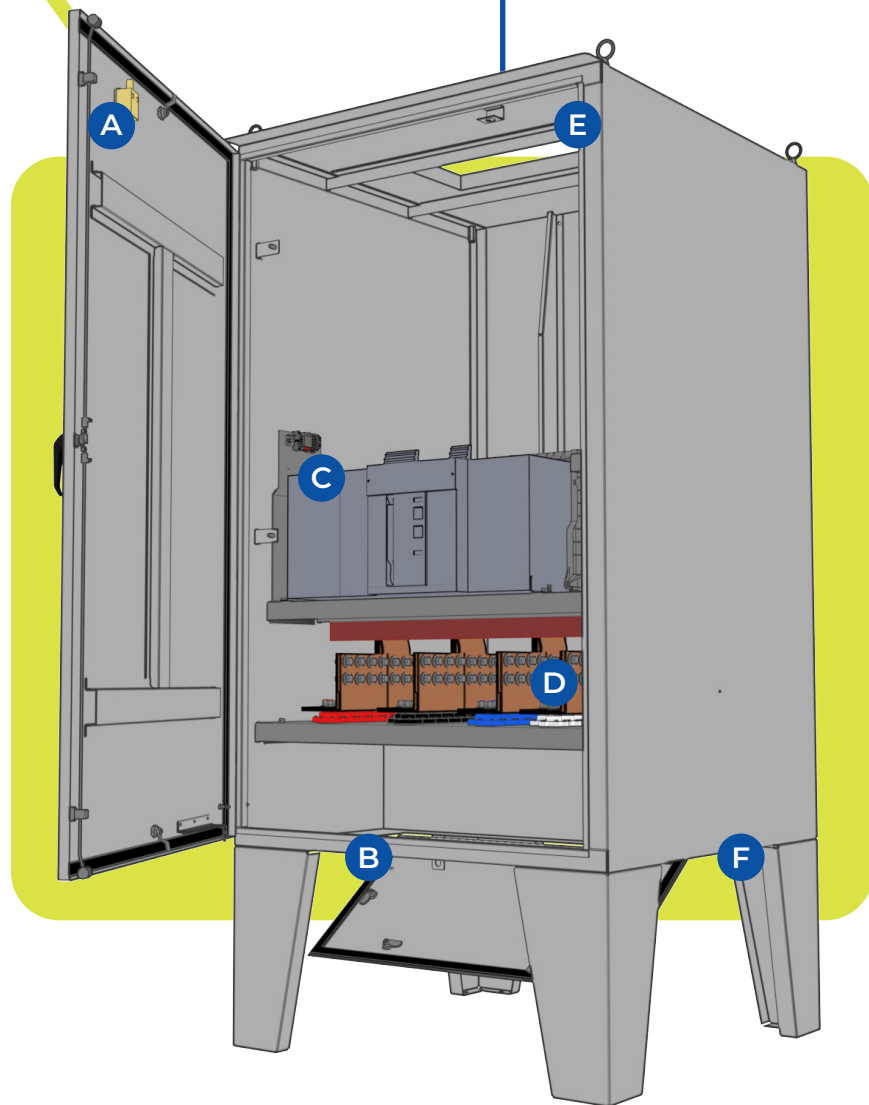
OUR CABLE BUS SYSTEM

QC-5000A-CA4-M-3R-MS-BRK-KK

Floor mounted quick connect with breaker and 3R rated for outdoor usage combined with our cable bus system.

## FEATURES

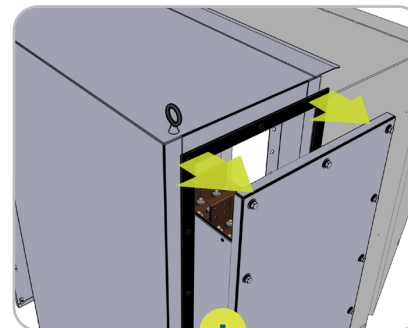
- A Kirk Key**  
Additional protection and security for maintenance and peace of mind.
- B Flip Bottom Door**  
3R rated and allows for easy access to camlocks.
- C Breaker**  
Molded case breaker 65kA with LSIG installed in-house.
- D Bus Bars**  
Tin-plated and allows for longevity of the entire system.
- E Top Entry**  
Customizable to cable bus enclosure size and allows for direct access.
- F Leg Kit**  
Freestanding option. Stands safely and securely on painted steel welded legs.



# CUSTOM BUILT BOX

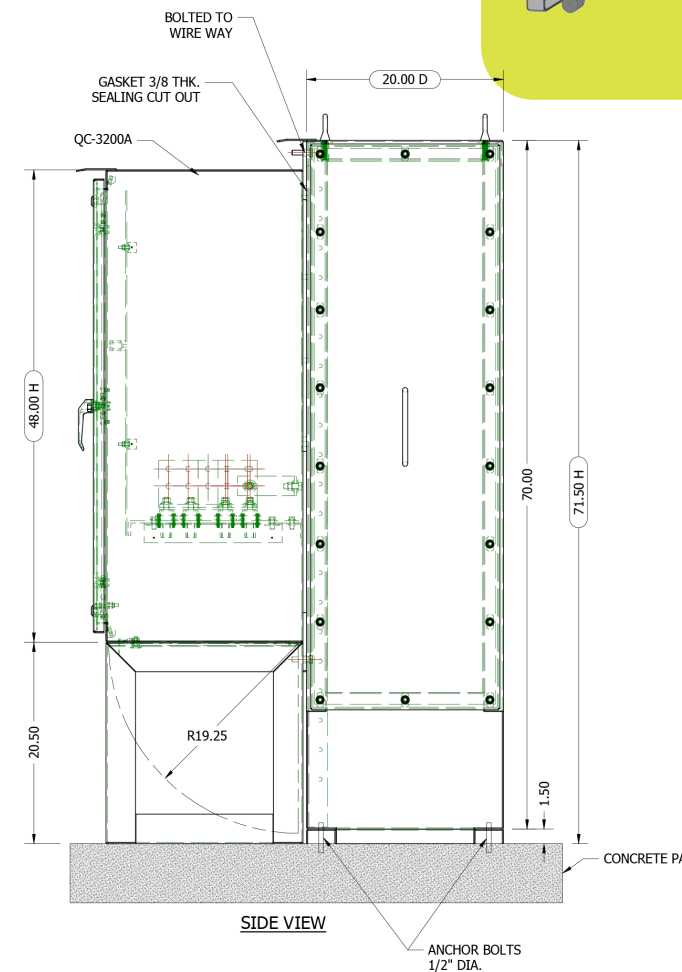
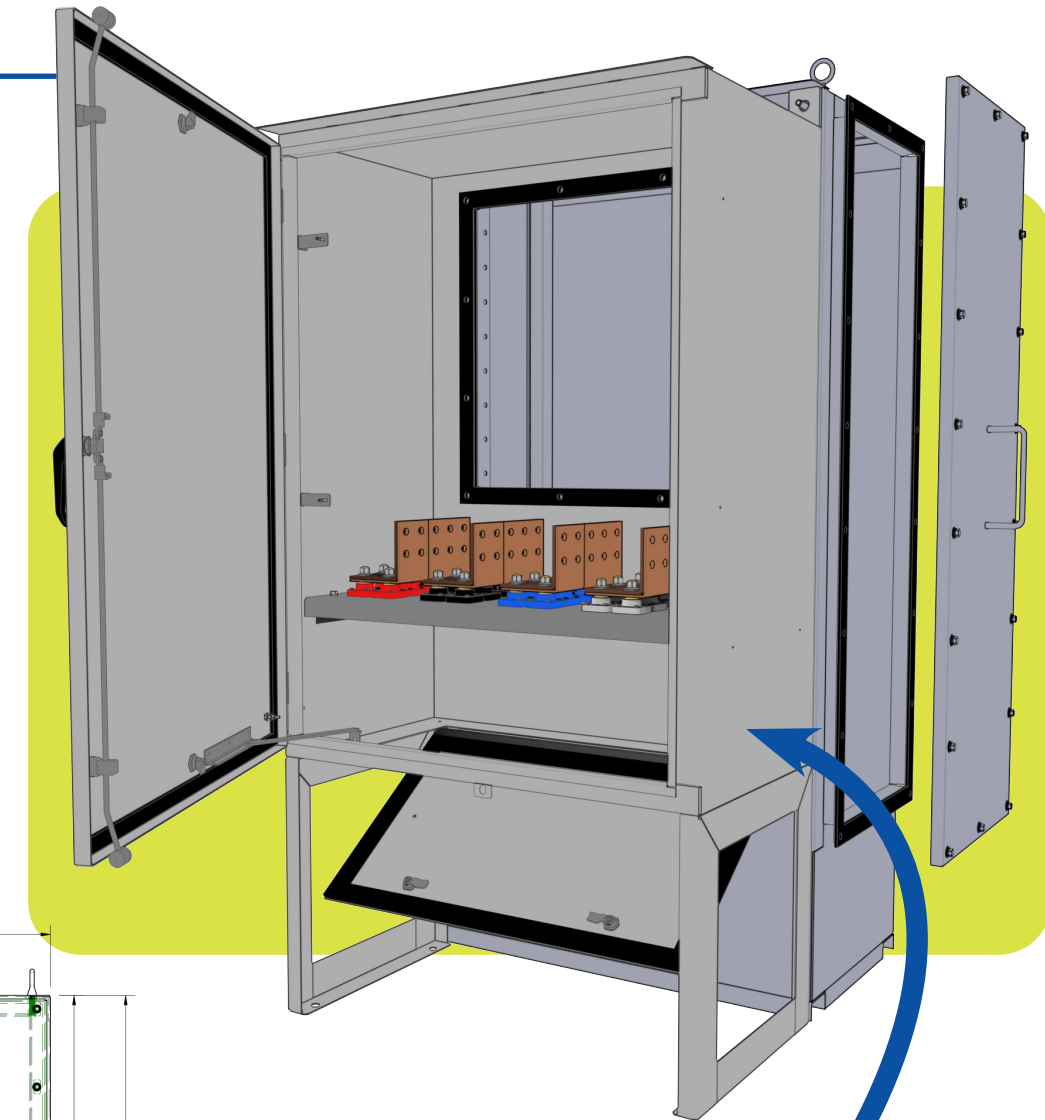
QC-6000A-CA5-F-3R-MS-X

Custom bolted support frame attached to a quick connect panel - 3R rated all around.



Removable Covers

Allows wireway to be easily accessible and maintained.



## SEND US YOUR REQUIREMENTS



SCAN ME TO FIND A SALES REP NEAR YOU

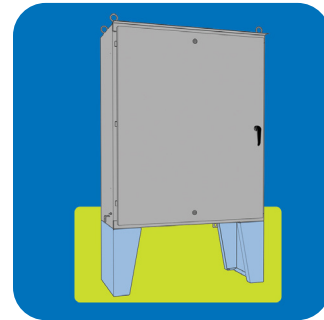
Any spec you want, we got it. Contact us and we will do our best to get you what you need.

# ACCESSORIES

Accessories can be pre-installed at our facility.  
Drawings are available upon request.

MONITORING SAFETY CONNECTIVITY

## Leg Kit



CODE: LK

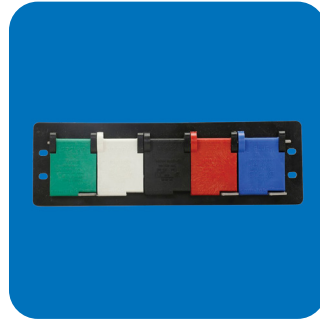


Quick connect panel stands safely and securely on steel welded legs. Painted to match\*.

\*Image highlighted for clarity



## Posi-Lok Panels



CODE: PL



Posi-Lok distribution panels offer a sequential interlock system providing quick and safe connections.



## Cable Sets\*

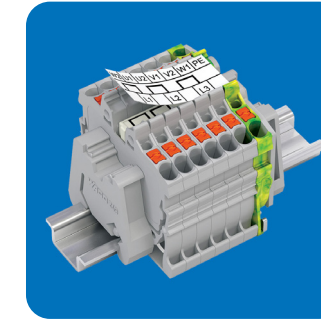


CODE: CS



Cable sets come complete with quick connect plugs and in any length. High quality UL/CSA certified flexible cable.

## Terminal Strip



CODE: TS



Terminal blocks mounted on DIN rail can be used for control circuits or other wiring applications.

## Camlock Snap Covers



CODE: CC



Camlock snap covers provide additional protection to the camlock receptacles.

## Microswitch Security



CODE: MS



Microswitches can be interlocked with doors in order to provide intrusion or interlock functionality.

## Camlock Adapters



CODE: CA



Camlock adapters allow you to change connection from male (genset) to female (loadbank) and vice-versa.

## Heater and Stat



CODE: HT



Regulates and ensures precise heating in the cabinet with a temperature-controlled system.

## Kirk Key Provision



CODE: KK

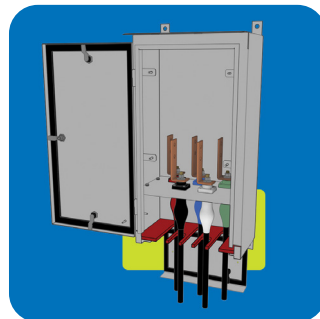


Keys are trapped and released in sequential order to ensure safe access to QC.

Provision only.  
Key interlock is not provided.



## Safety Cabinet



CODE: SC



Safety cabinet keeps users safe and prevents access to live wires. Utilizes a custom-fitted GPO-3 block.

## IR Window



CODE: IR



Visual and thermal inspections can be done without powering down with IR windows installed at the factory.



## Indicator Lights

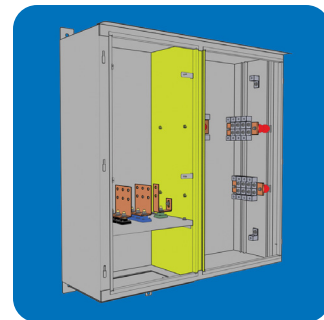


CODE: IL



Indicator lights can be used for phase indication, switch status, utility and generator power status and current sensing.

## Splitter Compartment



CODE: SP



Provides users with an alternative connection Mobile Generator or Load Bank with lug type connection.



## Electrical Receptacles



CODE: RE



Electrical receptacles allow for an easy and convenient connection for lights, block heaters, battery chargers, tools, and much more.

## Phase Sequence Monitor



CODE: PS



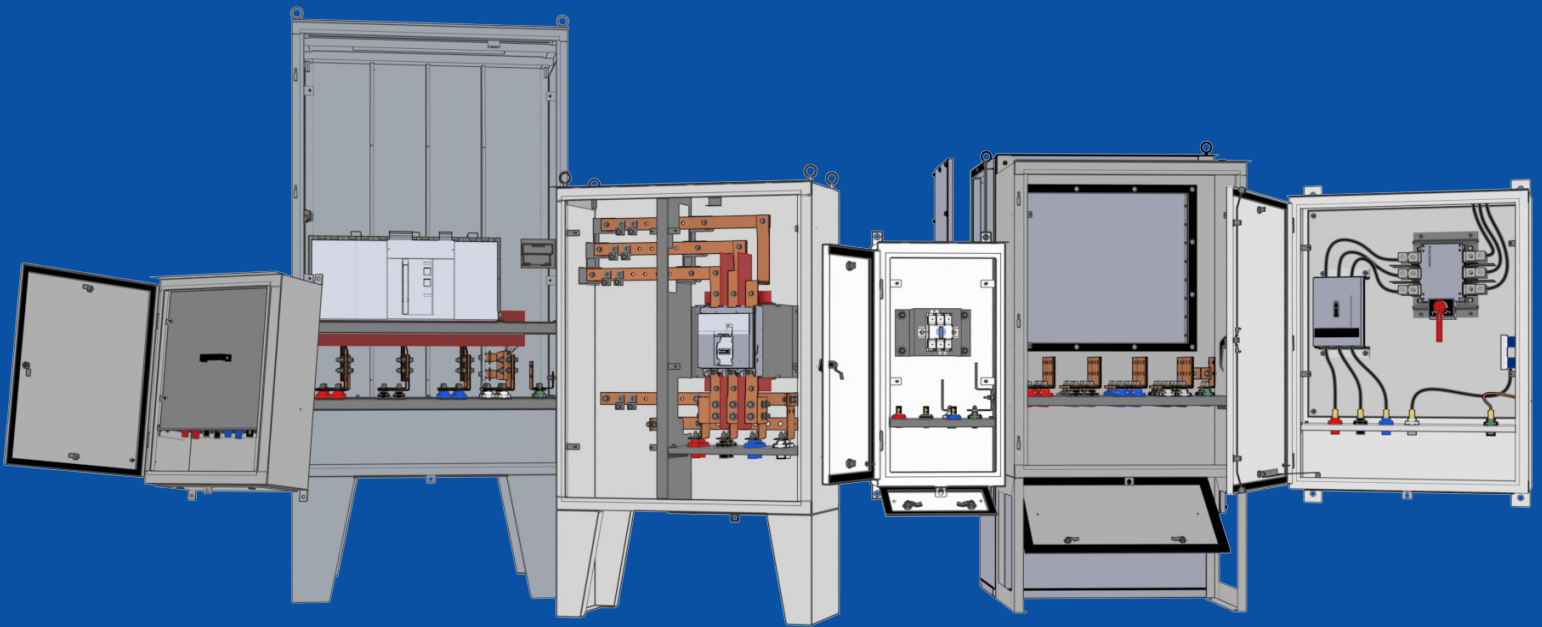
Provides the ability to monitor correct phase sequence and phase loss.

**Need Something?**  
Let us know if you can't find an accessory and we will do our best to solve your situation.

\*Order a cable set with your panels and delivered with QC terminations in any length.



# POWER BUSWAY LTD.



## GET IN TOUCH

Scan the code below to explore all our products and services.



### CONTACT US

T: 905.792.9333

F: 905.789.0510

TF: 1.877.877.2091

[sales-info@powerbusway.com](mailto:sales-info@powerbusway.com)

### ADDRESS

6900 Davand Drive

Mississauga, ON L5T 1J5 Canada