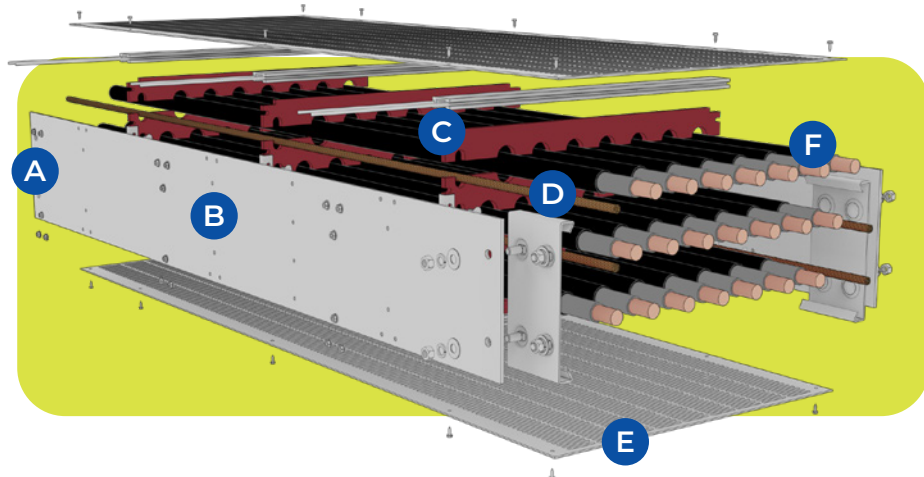
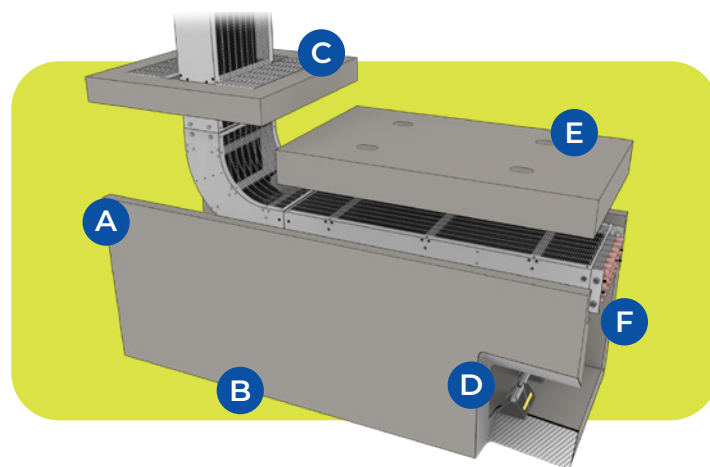


# CABLE BUS



- A Stainless Steel Hardware**  
Anti-seize coating for longevity. Resistant and durable for **indoor** or **outdoors**.
- B Aluminum 6061-T6 Side Rail**  
Applied in both **straight** and **bend** enclosures. Rust-resistant and reliable.
- C Cable Support Block**  
V0 flame-rated GPO-3 **protects** against short-circuit events.
- D Bond Cables**  
Reliability ensures **utmost safety** and **minimizing** voltage potential differences.
- E Slotted Cover**  
**Free-air rated** system allows optimal performance and **heat dissipation**.
- F Low to High Voltage Cables**  
Suitable for **diverse applications** of industries, building, and power networks.

# UNDERGROUND



- A Galvanized Steel Caps**  
Providing **robust protection** and weight-bearing support, ideal for road crossings.
- B Split Trenching**  
Ability to facilitate **diverse routing options** for varied infrastructural needs.
- C Assorted Ventilation Types**  
From goose necks, standard gratings to raised gratings. Ensures **optimal airflow**.
- D Recycled Rubber Support**  
Minimizes **vibrations**, withstands **freezing** and enables a **free-air rating**.
- E Load Rating**  
Meets the standard for **H20 Rating**. (16,000lbs per wheel load)
- F Dimensions**  
Expert designs will **recommend** ideal trench size. (32" x 32" / 32" x 48")

# TECH SPECS

Voltage Range	Up to 69kV
Current Range	Up to 8000A
Available Cable Sizes	Up to 1000MCM
Short Circuit Rating	Up to 200kA
Enclosure Size	Up to 12in (H) x 36in (W)
Finishes	Aluminum   Stainless Steel   Painted
Cable Configurations	3 Phase, 3 Wire   3 Phase, 4 Wire   DC
Min/Max Ambient Temp	-40°C to 60°C (-40°F to 140°F)
Cable Securing Method	Block style. Max every 30in
Underground Options	Precast or cast-in-place Pedestrian or heavy traffic grade With or without ventilation

# CERTIFICATIONS



3RD PARTY FACTORY EVALUATIONS AVAILABLE FOR APPLICABLE STANDARDS

**HAVE A QUESTION? FEEL FREE TO SEND US A MESSAGE!**

powerbusway.com  
sales-info@powerbusway.com

# POWER BUS WAY LTD.

## CABLE BUS SYSTEMS A POWER FEEDER SOLUTION



**CONTACT US**  
T: 905.792.9333  
F: 905.789.0510  
TF: 1.877.877.2091  
sales-info@powerbusway.com

**ADDRESS**  
6900 Davand Drive  
Mississauga, ON L5T 1J5 Canada

**POWERBUSWAY.COM**

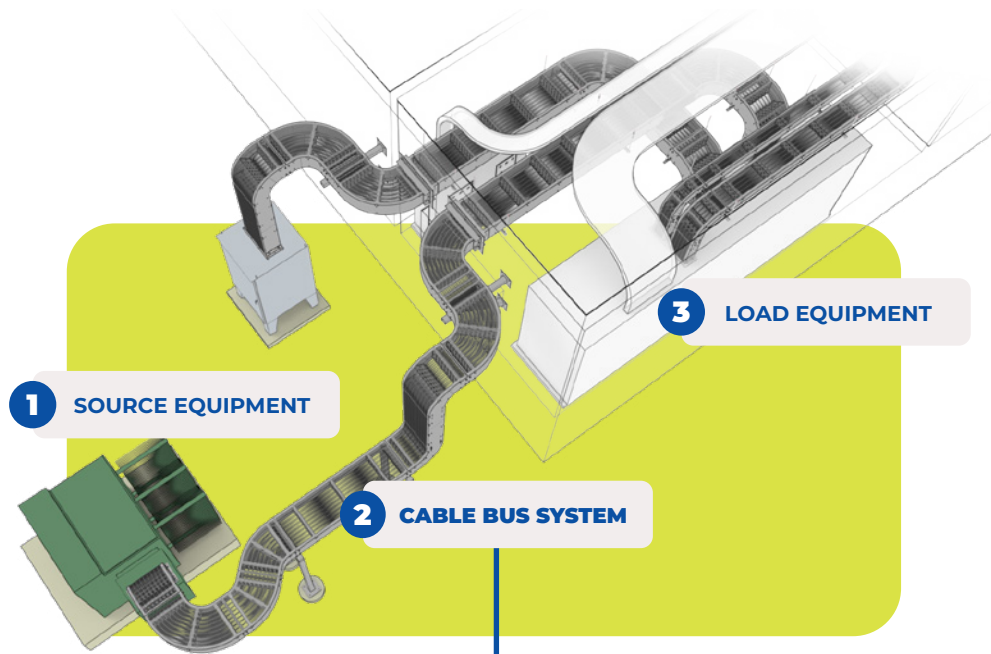
CONVENIENT ACCESS  
TO OUR SOCIAL MEDIA.

YOUTUBE. LINKEDIN. INSTAGRAM.



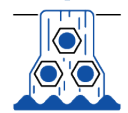
# APPLICATION

Indoor & Outdoors



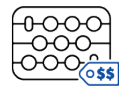
**SAFETY**

Robust and reliable design allows for dependable power supply at all times



**RELIABLE**

IP-66 Connectors protect the enclosure and allow the system to function even in the wet



**EFFICIENT**

Quick and efficient installation time means less money spent

# INDUSTRIES



DATA CENTERS

HEALTHCARE

TELECOMMUNICATIONS

POWER GENERATION

OIL & GAS

COMMERCIAL

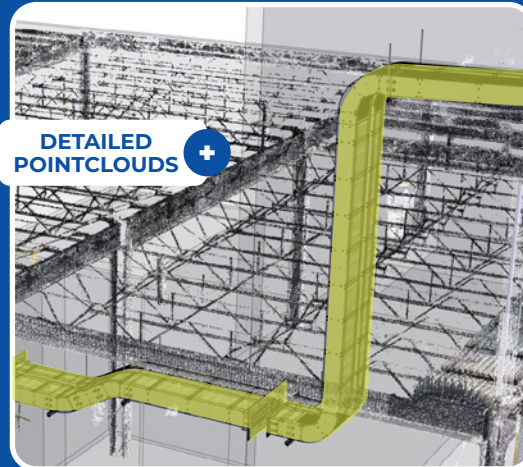
INDUSTRIAL

INSTITUTIONAL

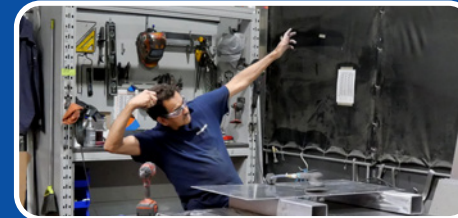
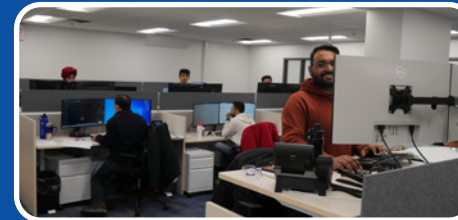


# SERVICES

3D Scan | Expert Support

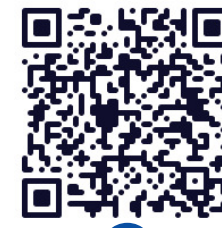
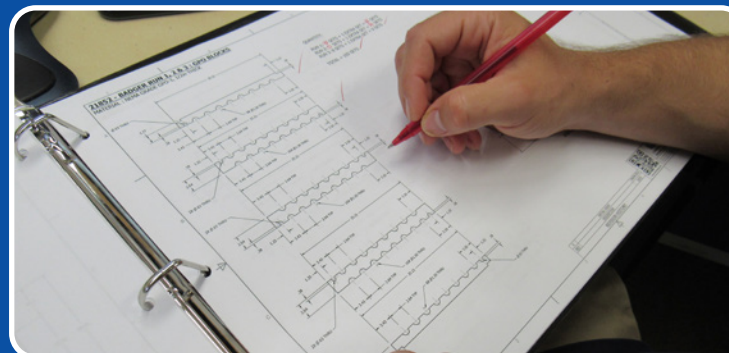


DETAILED POINTCLOUDS



YOU'RE IN GOOD HANDS

OVER 4000 SYSTEMS SUCCESSFULLY COMMISSIONED

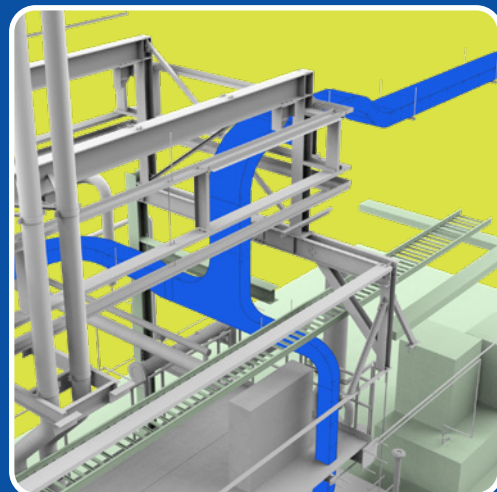


SCAN ME TO VIEW 3D SCAN BEFORE & AFTER



SINCE 2006

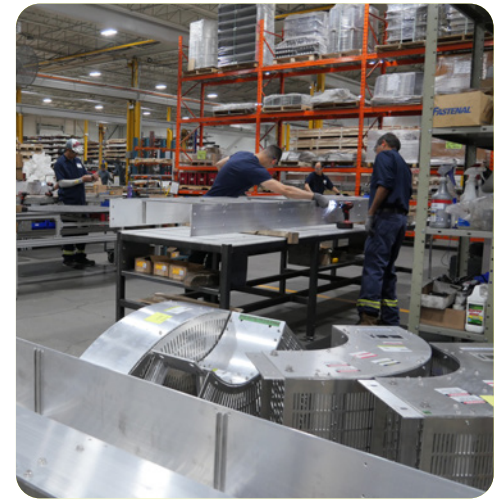
CUSTOM ENGINEERED TO SPEC



BIM - Custom Fitting Highlighted



Installation - Custom Fitting Highlighted



UNRIVALED DELIVERY.  
ON TIME. ALL THE TIME.

Part **arrived on time**, and **fit in perfectly**.

They do a great job of **labeling everything** with the numbers and all that so you can **roadmap how to assemble** it all.

Makes it **really easy** for the guys in the field.

NATIONAL CONTRACTOR, TEXAS



PUT A SMILE ON YOUR FACE.  
REQUEST A QUOTE OR CONTACT US.  
FREE OF CHARGE.

powerbusway.com/request-a-quote  
sales-info@powerbusway.com  
quotations@powerbusway.com