



# OUR QUICK CONNECT POWER BUSWAY



Scan me for info!  
[powerbusway.com](http://powerbusway.com)



# PREPARE & RECOVER

At Power Bus Way, we **design** and **manufacture** Quick Connect Panels that are highly **adaptable** and **customizable** to fit multiple power configurations, ensuring that you always have access to power.

It is crucial to have a **fast** and **reliable** connection to backup power sources to ensure the resilience of your electrical infrastructure. Our primary goal is to provide you with the best solutions to meet your specific power needs and equip you for **unexpected power outages**.

We have an **ISO 9001:2015 certified** fabrication facility where we can build Quick Connect Panels that are tailored to your requirements. Our panels are rated between **100A** to **6000A**, making them suitable for a wide range of **indoor** and **outdoor** applications.

You can select from **Steel, Aluminum, 304 Stainless Steel, or 316 Stainless Steel** construction, as well as a range of mounting styles, finishes, and opening types to suit your needs.

We have a stocking program in place to ensure that we can **deliver quickly**. Additionally, we offer a **fast turnaround time** when ordering customized Quick Connect Panels.

Our panels have a **smaller footprint** than others available on the market, and we exceed industry standards, ensuring that you receive only the **best quality**.

## ISO 9001:2015 CERTIFIED FACILITY

Power Bus Way can custom build a Quick Connect Panel to fit all of your power needs and be suitable for all environments



# APPLICATIONS

Proudly Built with Quality North American Products



## DISASTER RECOVERY

- Permanent fixture to **quickly connect** mobile generators
- Ability to **recover quickly** without need of permanent generators
- **Avoid safety hazards** of connecting generators directly to distribution equipment



## EVENT POWER

- For theaters, convention centers, arenas, and auditoriums, **specialized panel boards** are often necessary to connect portable electrical equipment.
- Equipment integration is **vital** to meet event-specific requirements.



## LOAD BANK CONNECTION

- Ideal for **maintaining the performance** of your generators and UPS (Uninterrupted Power Supply) systems
- **Seamless** load bank connection allowing for quick set up for **testing** and both generator and UPS systems



## TEMPORARY LOAD TRANSFER

- Keep your critical loads **protected** during a scheduled or emergency maintenance shutdown
- Equipped with manual transfer switch and Kirk Key accessories, a **safe way to transfer** the essential loads on to temporary power

# SPECIFICATIONS

## ELECTRICAL

VOLTAGE	120V - 600V
CURRENT	100A - 4000A, 4000A+ Available
CONFIGURATION	See below for phase configurations
CERTIFICATIONS	UL Listed, CSA C22.2 No. 178.1-14, 244:19, UL 1008, 1773, 891

## MECHANICAL

ENCLOSURE TYPE	2, 3R, 3RX, 4, 4X
MATERIALS	Steel, Aluminum, 304 Stainless Steel, 316 Stainless Steel
FINISHES	Painted (Standard Industry Finishes, Custom Colours), Galvanized, Natural
ASSEMBLY	Welded, Bolted (Indoor Only)
OPENING TYPES	Welded Loop, Recessed Finger, Latched Handle
HANDLE TYPES	Panel, Single Door, Double Door, Custom Cut-outs Available
ENCLOSURE SIZE	Up to 8'H x 8'W x 6'D
MOUNTING	Wallmount, Floormount, Custom Mount Available
CERTIFICATIONS	CSA C22.2 No. 94.1/94.2, UL 50/50E



VOLTAGE	USA						CANADA					
	CODE	CAMLOCK COLOUR GUIDE					CODE	CAMLOCK COLOUR GUIDE				
		A	B	C	N	G		A	B	C	N	G
120 / 240V	US1	●	●		○	●	CA1	●	●		○	●
240V	US2	●	●	●		●	CA2	●	●	●		●
208Y / 120V	US3	●	●	●	○	●	CA3	●	●	●	○	●
480Y / 277V	US4	●	●	●	○	●						
480V	US5	●	●	●		●						
600Y / 347V							CA4	●	●	●	○	●
600V							CA5	●	●	●		●

# QUICK CONNECT



## CERTIFICATIONS

- CSA C22.2 No. 94.1/94.2
- CSA C22.2 No. 178.1-14
- UL 1008
- UL 1773
- UL 50/50E

## FEATURES

- Welded metal construction
- Enclosure rating up to 4X
- Colour-coded camlock receptacles
- Custom colours available
- Ventilated enclosure
- While-in-use preventative access
- Available in a variety of voltage configurations
- Standard current ratings up to 4000A
- Configurable for Inlet (Generator) or Outlet (Load Bank, Event Power)



# QC+BREAKER



## CERTIFICATIONS

- CSA C22.2 No. 94.1/94.2
- CSA C22.2 No. 244:19
- UL 891
- UL 50/50E

## FEATURES

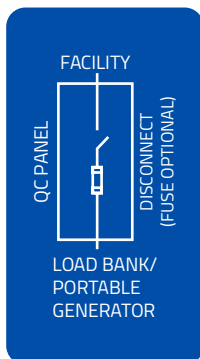
- Welded metal construction
- Enclosure rating up to 4X
- Colour-coded camlock receptacles
- Custom colours available
- Ventilated enclosure
- While-in-use preventative access
- Available in a variety of voltage configurations
- Standard current ratings up to 4000A
- Configurable for Inlet (Generator) or Outlet (Load Bank)
- Molded Case Breaker, 25kA & 65kA. Optional LSIG



CURRENT RATING			CONNECTION TYPE ( MAX 3)		ENCLOSURE MATERIAL		OPTIONAL ACCESSORIES	
100	1600	3200	M: Male Camlock F: Female Camlock L: Mechanical Lugs		AL: 5052 Aluminum MS: Mild Steel SS: 304 Stainless Steel SS16: 316 Stainless Steel		X: None See Accessories Page for Options	
200	2000	3600						
400	2400	4000						
800	2800							
1200	3000							
QC	3200	US1	M	3R	AL	WM	X	
	VOLTAGE		ENCLOSURE TYPE		MOUNTING PROVISION			
	US1: 120V/240V		2 3RX		WM: Wall Mount			
	US2: 240V		3 4		FM: Floor Mount			
	US3: 208Y/120V		3R 4X		PM: Pad Mount			
US4: 480Y/277V								
US5: 480V								
CA1: 120V/240V								
CA2: 240V								
CA3: 208Y/120V								
CA4: 600V/347V								
CA5: 600V								

<div>QC</div>	CURRENT RATING			<div>CONNECTION TYPE ( MAX 3)</div> <div>M: Male Camlock F: Female Camlock L: Mechanical Lugs</div>	<div>ENCLOSURE MATERIAL</div> <div>AL: 5052 Aluminum MS: Mild Steel SS: 304 Stainless Steel SS16: 316 Stainless Steel</div>	<div>PROTECTION DEVICE ( MAX 3)</div> <div>BRK25: Molded Case, 25kA BRK25LSIG: Molded Case, 25kA, LSIG BRK65: Molded Case, 65kA BRK65LSIG: Molded Case, 65kA, LSIG</div>		
	100	1600	3200					
	200	2000	3600					
	400	2400	4000					
	800	2800						
1200	3000							
	3200	US1	M	3R	AL	WM	BRK25	X
VOLTAGE			<div>ENCLOSURE TYPE</div> <div>2 3RX 3 4 3R 4X</div>	MOUNTING PROVISION		OPTIONAL ACCESSORIES		
US1: 120V/240V	CA1: 120V/240V	WM: Wall Mount		<div>X: None See Accessories Page for Options</div>				
US2: 240V	CA2: 240V	FM: Floor Mount						
US3: 208Y/120V	CA3: 208Y/120V	PM: Pad Mount						
US4: 480Y/277V	CA4: 600V/347V							
US5: 480V	CA5: 600V							

# QC+DISCONNECT



## CERTIFICATIONS

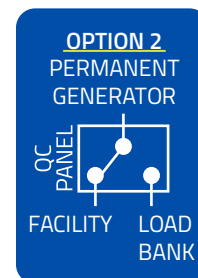
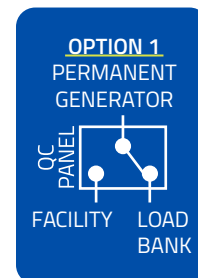
- CSA C22.2 No. 94.1/94.2
- CSA C22.2 No. 244:19
- UL 50/50E
- UL 891

## FEATURES

- Welded metal construction
- Enclosure rating up to 4X
- Colour-coded camlock receptacles
- Custom colours available
- Ventilated enclosure
- While-in-use preventative access
- Available in a variety of voltage configurations
- Current ratings up to 1200A
- Configurable for Inlet (Generator) or Outlet (Load Bank)
- Disconnect Switch can be non-fused or fused



# QC+MTS

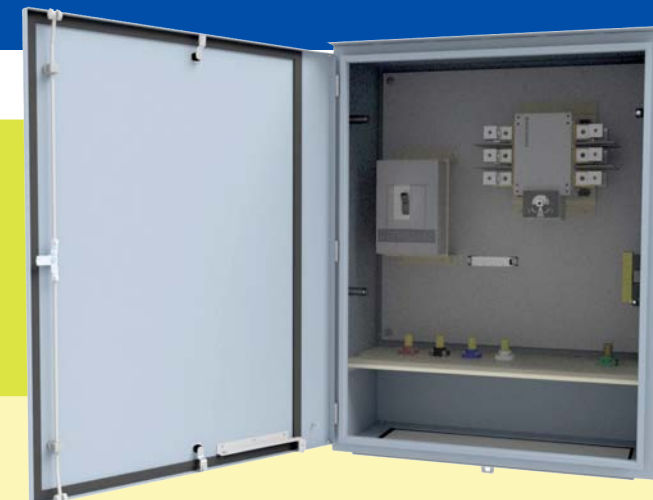


## CERTIFICATIONS

- CSA C22.2 No. 94.1/94.2
- CSA C22.2 No. 178.1-14
- UL 50/50E
- UL 1008
- UL 1773

## FEATURES

- Welded metal construction
- Enclosure rating up to 4X
- Colour-coded camlock receptacles
- Custom colours available
- Ventilated enclosure
- While-in-use preventative access
- Available in a variety of voltage configurations
- Standard current ratings up to 800A
- Configurable for Inlet (Generator) or Outlet (Load Bank, Event Power)



QC	CURRENT RATING	CONNECTION TYPE ( MAX 3)	ENCLOSURE MATERIAL	DISCONNECT (MAX 3)			
	100	M: Male Camlock	AL: 5052 Aluminum	NF: Non-Fused			
	200	F: Female Camlock	MS: Mild Steel	FD: Fused			
	400	L: Mechanical Lugs	SS: 304 Stainless Steel				
	800		SS16: 316 Stainless Steel				
1200							
1200	US1	M	3R	AL	WM	NF	X
	VOLTAGE	ENCLOSURE TYPE	MOUNTING PROVISION	OPTIONAL ACCESSORIES			
US1: 120V/240V	CA1: 120V/240V	2 3RX	WM: Wall Mount	X: None			
US2: 240V	CA2: 240V	3 4	FM: Floor Mount	See Accessories Page			
US3: 208Y/120V	CA3: 208Y/120V	3R 4X	PM: Pad Mount	for Options			
US4: 480Y/277V	CA4: 600V/347V						
US5: 480V	CA5: 600V						

QC

800

US1

M

3R

AL

WM

MT

X

CURRENT RATING

100  
200  
400  
800

CONNECTION TYPE ( MAX 3)

M: Male Camlock  
F: Female Camlock  
L: Mechanical Lugs

ENCLOSURE MATERIAL

AL: 5052 Aluminum  
MS: Mild Steel  
SS: 304 Stainless Steel  
SS16: 316 Stainless Steel

SWITCH

MT: Manual Transfer

VOLTAGE

US1: 120V/240V  
US2: 240V  
US3: 208Y/120V  
US4: 480Y/277V  
US5: 480V  
CA1: 120V/240V  
CA2: 240V  
CA3: 208Y/120V  
CA4: 600V/347V  
CA5: 600V

ENCLOSURE TYPE

2 3RX  
3 4  
3R 4X

MOUNTING PROVISION

WM: Wall Mount  
FM: Floor Mount  
PM: Pad Mount

OPTIONAL ACCESSORIES

X: None  
See Accessories Page for Options

# ACCESSORIES

## ACCESSORIES FOR EVERY SITUATION

Power Bus Way Ltd. offers a broad range of high-quality accessories that can be pre-installed at our facility to ensure they fit and function correctly for the entire life of the enclosure.

Code: CS



### CABLE SETS

Cable sets come complete with quick connect plugs and in any length. High quality UL/CSA certified flexible cable.

Code: RE



### RECEPTACLES

Electrical receptacles allow for an easy and convenient connection for lights, block heaters, battery chargers, tools, and much more.

Code: HT



### HEATER & STAT

Provides heating to cabinet with temperature control.

Code: CC



### CAMLOCK SNAP COVERS

Camlock snap covers provide additional protection to the camlock receptacles.

Code: SP



### SPLITTER COMPARTMENT

Provides users with an alternative connection Mobile Generator or Load Bank with lug type connection.

Code: PL



### POSI-LOCK PANELS

Posi-Lock distribution panels offer a sequential interlock system providing quick and safe connections.

Code: PS



### PHASE SEQUENCE MONITOR

Phase sequence monitor provides the ability to monitor correct phase sequence and phase loss.

Code: LK



### LEG KIT

Freestanding option. Quick connect panel stands safely and securely on steel welded legs.

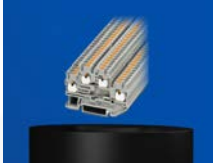
Code: MS



### MICROSWITCH

Micro-switches can be interlocked with the door in order to provide intrusion or interlock functionality.

Code: TS



### TERMINAL STRIP

Terminal blocks mounted on DIN rail can be used for control circuits or other wiring applications.

Code: IR



### IR WINDOW

Visual and thermal inspections can be done without powering down with IR windows installed at the factory.

Code: IL



### INDICATOR LIGHTS

Indicator lights can be used for phase indication, switch status, utility and generator power status and current sensing.

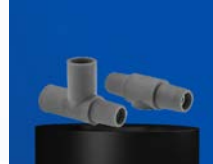
Code: SC



### SAFETY CABINET

Safety cabinet keeps users safe and prevents access to live wires.

Code: CA



### CAMLOCK ADAPTERS

Camlock adapters allow you to change connection from male (genset) to female (loadbank) and vice-versa.

Code: KK



### KIRK KEY PROVISION

Keys are trapped and released in sequential order to ensure safe access to the Quick Connect panel. Provision only. Key interlock is not provided.

Code: ?



### NEED SOMETHING?

Let us know if you can't find an accessory.

## REASONS TO COUNT ON US

Power Bus Way has been delivering **fully customized** and **cost-effective** power feeder systems since 2006, satisfying thousands of clients. No matter the size of the project, we can create both indoor and outdoor systems that are **highly reliable** and **maintenance-free**.

Our streamlined engineering and designing process allows us to create fully tailored products quickly and accurately, staying **within budget** and **on schedule**.

Our team, consisting of skilled engineers and designers, have access to the latest technologies and equipment to provide optimal solutions every time.

We offer a comprehensive range of **services**, including **application engineering**, **3D site scanning**, and **on-site support**, to ensure that your needs are met at every stage of the process.



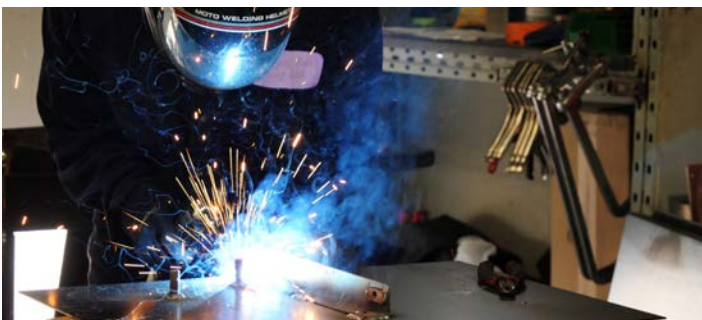
# CONTACT US FOR A QUOTE!

VISIT OUR WEBSITE FOR MORE DETAILS

## POWER BUS WAY

6900 Davand Drive  
Mississauga, ON L5T 1J5 Canada  
[sales-info@powerbusway.com](mailto:sales-info@powerbusway.com)

Telephone: 905.792.9333  
Fax: 905.789.0510  
Toll Free: 1.877.877.2091



Subscribe to Power Bus Way



Follow us on LinkedIn